



ONP Paint rack – Pick List

- ¼-20 x 1½" socket cap screw – Qty: 8
- ¼-20 nut – Qty: 8
- Cross bar – Qty: 2
- Uprights – Qty: 2
- L-base – Qty: 2
- Shelves for 150ml cans – Qty: 5
- Shelf for 400ml cans – Qty: 1
- Header support base – Qty: 1
- On Point Header – Qty: 1
- Shelf Stickers – Qty: 6

Safety Anchor system

- E-Z Anchor package – Qty: 1
- D-Ring hanger – Qty: 2
- Zip-tie – Qty: 2 (2 extra's, 4 total)

Tools

- 7/16" combination wrench – Qty: 1
- 3/16" hex key – Qty: 1



ASSEMBLY INSTRUCTIONS

STEP 1

PARTS REQUIRED (Figure 1):

- L-base – Qty: 2
- Cross bar – Qty: 1
- $\frac{1}{4}$ -20 x $1\frac{1}{2}$ " socket cap screw – Qty: 4
- $\frac{1}{4}$ -20 nut – Qty: 4

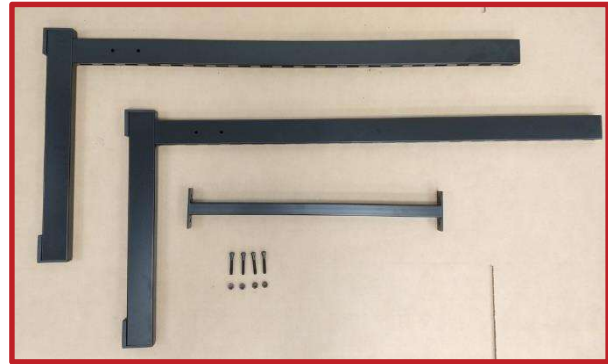


Figure 1: Step 1 Parts Required

-Secure the Cross Bar between the two L-Base pieces using 4x Socket Cap Screws and 4x Nuts. The nut should be on the inside of the cross bar (See Figure 2).

-Hand tighten the nuts to keep everything in place (Figure 3).



Figure 2: Screw/Nut Placement



Figure 3: Step 1 complete



STEP 2

PARTS REQUIRED (Figure 4):

- Uprights – Qty: 2
- Cross bar – Qty: 1
- $\frac{1}{4}$ -20 x $1\frac{1}{2}$ " socket cap screw – Qty: 4
- $\frac{1}{4}$ -20 nut – Qty: 4

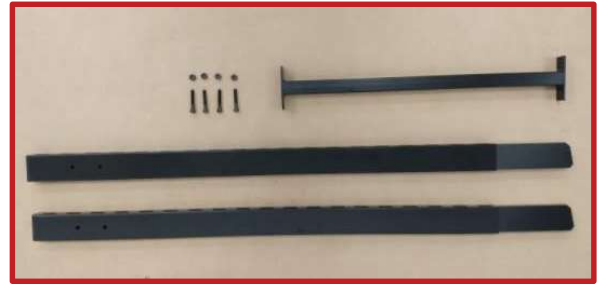


Figure 2: Step 2 Parts Required

-Secure the Cross Bar between the two Up-right bars using 4x Socket Cap Screws and 4x Nuts. The nut should be on the inside of the cross bar (See Figure 2).

-Hand tighten the nuts to keep everything in place.

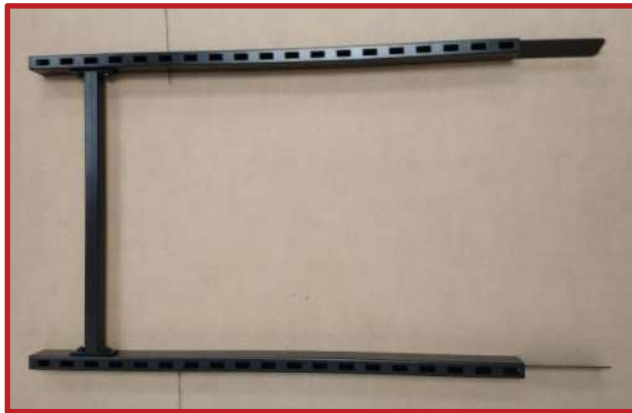


Figure 3: Step 2 complete

STEP 3

-Insert the Uprights into the L-Base bars. Gently wiggle until the outside of the bars are flush with each other.

-Tighten all the screws/nuts using the tools provided.



Figure 4: Step 3 complete



STEP 4

REQUIRED PARTS

- E-Z Anchor package – Qty: 1
- D-Ring hanger – Qty: 2
- Zip-tie – Qty: 2



Figure 5: Step 4 Parts Required

-Using a pencil through the 3rd or 4th hole from the top of the upright, mark the wall where the anchor would line up directly behind the bar. Insert the drywall anchor.

-using the screw in the E-Z anchor package, fix the D-Ring hanger to the anchor (See Figure 8).

-Using the Zip-tie, secure the upright to the D-Ring hanger to secure the rack (See Figure 9).



Figure 7: D-Ring hanger screwed into drywall anchor



Figure 6: Rack secured to wall

STEP 5

REQUIRED PARTS

- Header support base – Qty: 1
- On Point Header – Qty: 1



Figure 8: Step 5 Required Parts

-Insert the Header Card into the Header Card Holder and gently push down until it is snug and in place.

-Place the Header Card Holder on top of the top Cross Bar and push down until it is secure.



STEP 6

REQUIRED PARTS

- Shelf for 400ml cans – Qty: 1
- Shelves for 150ml cans – Qty: 5
- Shelf Stickers – Qty: 6

Figure 10: Step 6 Required parts. Top: Shelf for 400ml Cans. Bottom: Shelf for 150ml Cans.



Figure 92: Step 6 Required Parts. Shelf stickers.

-Find the top shelf designed for the 400ml paint cans and set aside to be installed last.

-Insert the top hook from the 5x 150ml paint can racks from the bottom up, starting at the 9th hole from the bottom, and insert every 5th hole.

*This leaves enough room to store overstock boxes under the rack.

- Finally insert the 400ml paint can rack 5 holes above the 5th rack.

-The shelves may need slight adjustments to level out. Gently push down and/or side to side to get the bottom of the shelves resting inside the holes below the hooks.

-Very carefully, place the stickers on the appropriate racks, starting with the 400ml paint sticker on the top rack, and continue down in numerical order.

****Please note the third shelf from the bottom has a replacement sticker separate from the sheet. ****



Figure 11: Rack sticker placement



STEP 7

-Load the paint Rack matching the part number on the can to the description on the sticker.



Figure 12: Step 7 complete